

### III. PRIMARY RESULTS

#### Flood Hazard Mapping

#### Dissemination & Discussion with stakeholders and local people





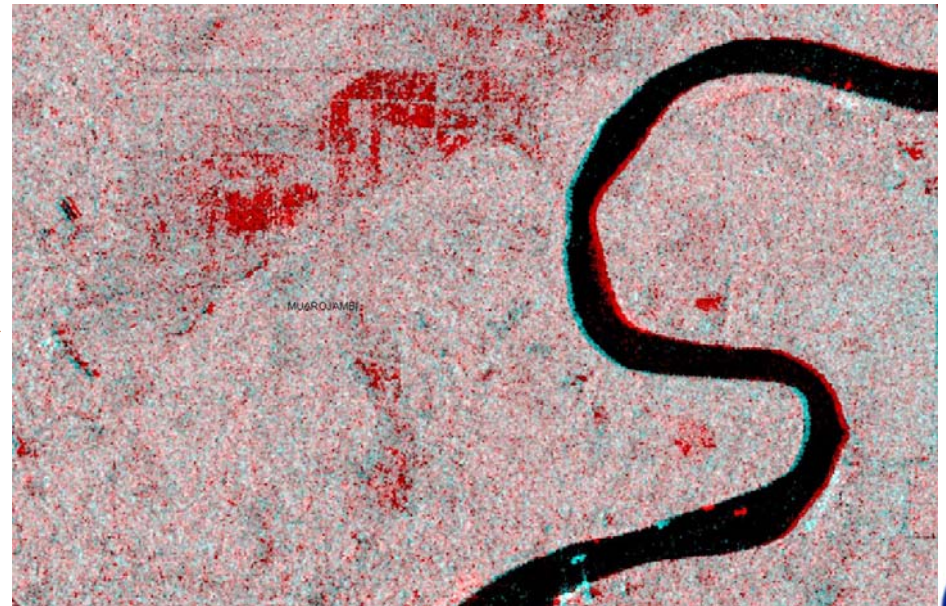
## Next steps

- Field measurement (soil properties) for understanding the runoff mechanism at the study area
- Improving the RRI Modeling with the field and new remote sensing data (Sentinel)
- Prepare a flood hazard map at the river basin scale under changing climate and landuse scenario
- Workshop at LIPI Limnology: APCE - RC Limnology - JASTIP (Dr. T. Sayama & Team)

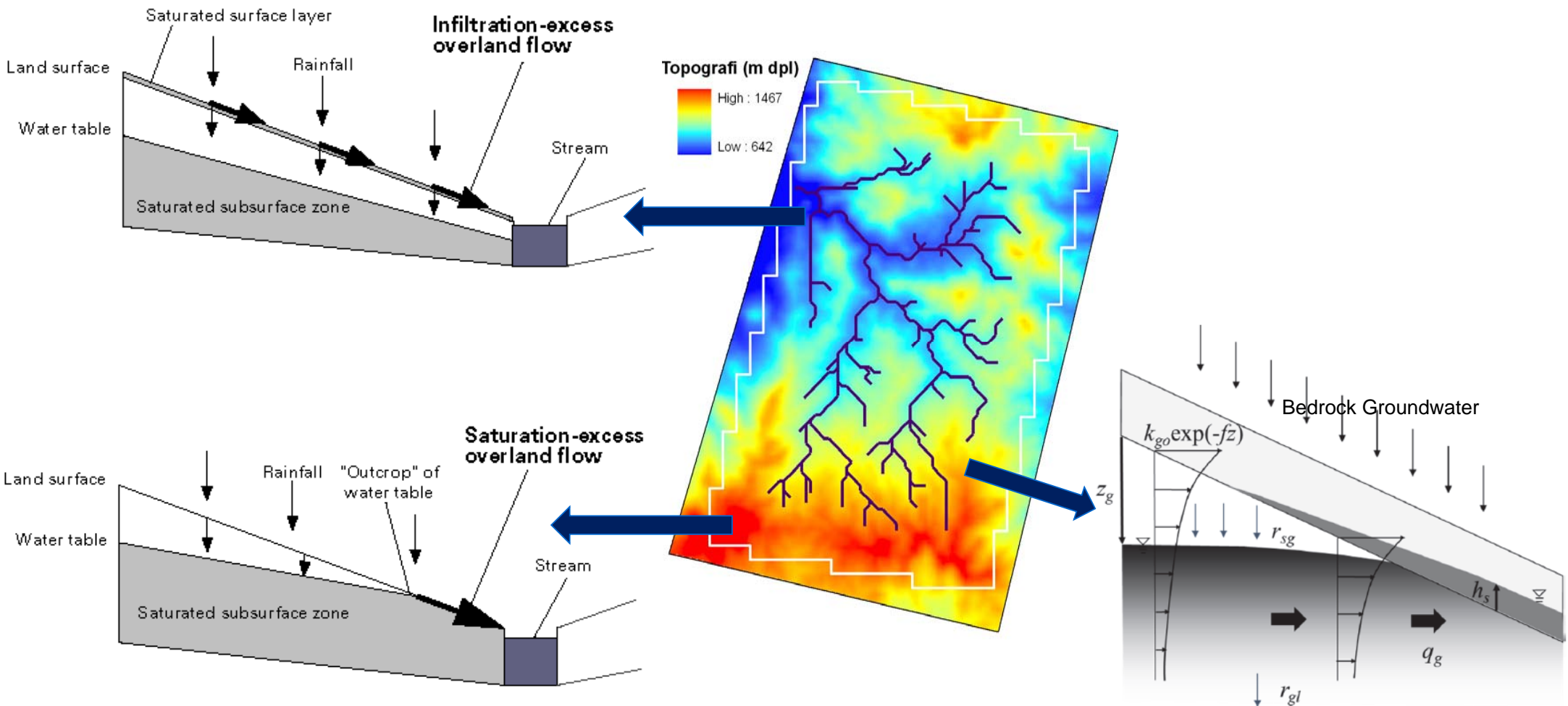
Sentinel Satellite Image, No Flood (dry)



Extracted Flooded Area from Sentinel, December 30, 2016



# Overland flow Mechanism





Assoc. Prof. Takahiro SAYAMA, his student, LIPI Team visited Batanghari River basin (April & October 2016)



Potential Collaborative Research under JASTIP:



Takahiro Savama (DPRI) & Apip (LIPI)

**"Impact Assessment of Tropical Forest Deforestation and Climate Change in Sumatra, Indonesia on Catchment Hydrologic Cycle Including Downstream Peatland Area."**



Thank You



**LEMBAGA ILMU PENGETAHUAN INDONESIA**  
(INDONESIAN INSTITUTE OF SCIENCES)



Jambi, 6th of October 2016

[www.lipi.go.id](http://www.lipi.go.id)